

Singleton Shire Healthy Environment Group

“Drayton South Underground Mining Lease”



A community-based group looking to address Environmental issues affecting Singleton Shire residents

P.O. Box 626
Singleton NSW 2330
ssheg@hotmail.com

Author: Dr Neville Hodkinson PhD

We seek identification as to what is making our Children and Community Sick so they can be mitigated by OH&S Compliance Orders.

SSHEG Focus on Health

SSHEG is Not Anti Mining or Anti Power Stations

**Director Resources Policy
Department of Planning and Environment
GPO Box 39, Sydney 2001
1300 305 695**

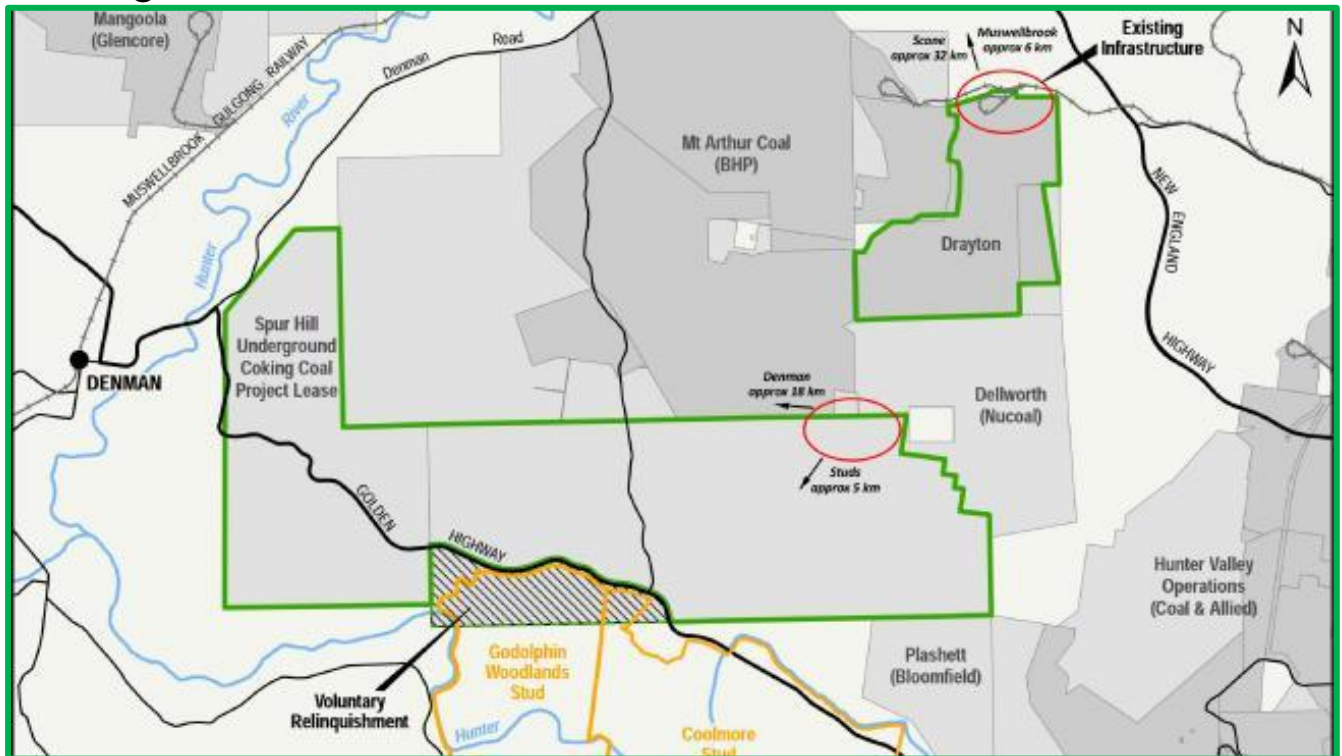
“Open Cut mining prohibition for Drayton South”

This SSHEG Submission Supports “Underground Mining in the Hunter Valley, and this Drayton South Proposal in particular.



The proposed prohibition requires amendments to the:

- State Environmental Planning Policy (Mining, Petroleum Production and Extractive Industries) 2007
- State Environmental Planning Policy (State and Regional Development) 2011.
- Drayton South is the subject of recommendations by the independent Planning Assessment Commission.



Since the formation of Singleton Shire Healthy Environment Group in 2008 our focus on Air Quality has been on Community Health of especially Children in the Hunter Valley and the Near neighbours as Occupationally Exposed to Open Cut Coal Mines and Coal Fired Power Stations.

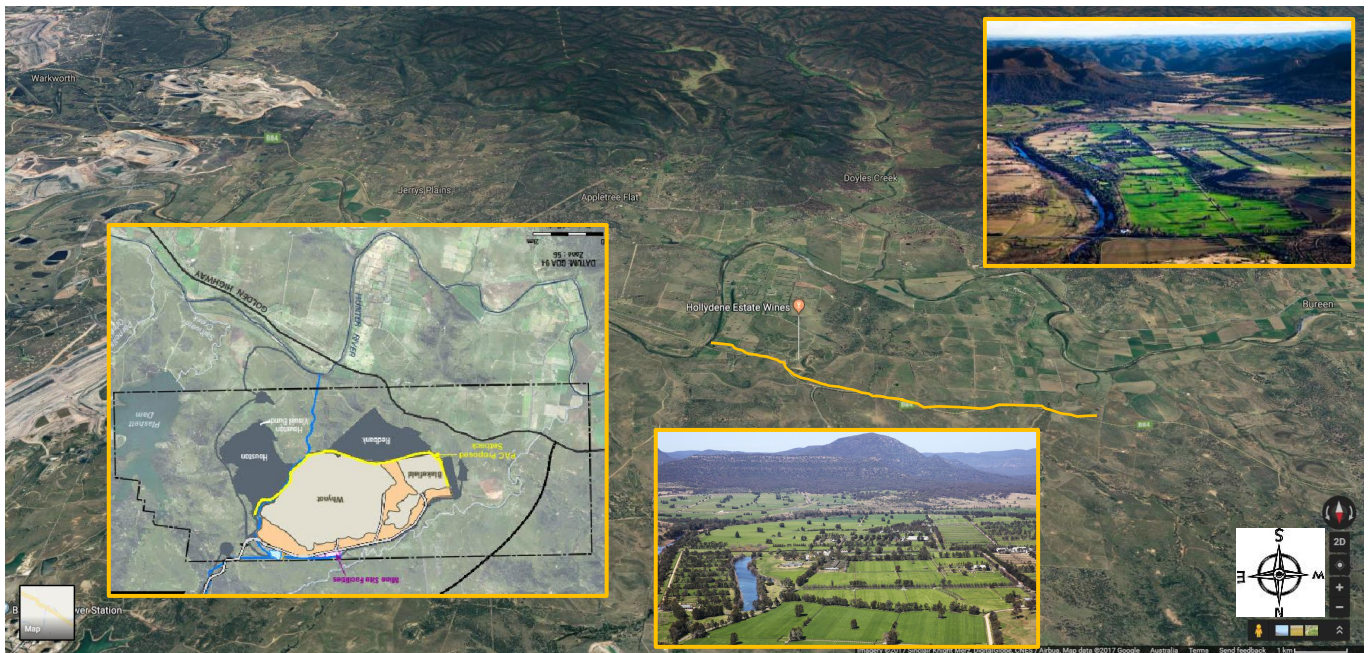
Specifically; Air Quality, Mine Noise, Rural Rainwater Tanks Contamination, and Subsurface Water impacts remain today as Community Health Concerns. The “SSHEG Air Pollution Health Study Review 2014” below summarised six years of investigations, prioritising the Exposure Disease Risk to our Rural Communities; less from underground mining.

However, Underground Coal Mining has been the mainstay of our Australian Society and SSHEG is not alone, with the most Mine aggrieved Bulga Community also publicly support Underground Coal Mining.

SSHEG AIR POLLUTION HEALTH STUDY REVIEW 2014

Focus on Community Health & Air Pollution Mitigation Issues

- (1) **“Elimination of Mine Blasting into the Atmosphere” by use of Plastic Blast Hole Stemming Plugs to stop “Community Gassings”.**
- (2) **“Near Neighbours and Farming Families” to be “Occupationally Exposed Persons to Open Cut Mining Operations”**
with EPA Compliance Orders, as Pseudo Underground Mine Ventilation Standards.
Dust Storms characteristics, eg 500 ug/m³ for 40 minutes.
- (3) **Diesel Exhaust Pathways and Isodose Zones**
Exposure Criteria based on Underground Mines at < 0.1 mg/m³ or 100ug/m³
- (4) **Biological Asthma Susceptibility & Allergen Calendar**
Real Time Methodology & Valley Drifting Patterns.
- (5) **Coal Power Stations - Stack Plumes Gases with Toxic Fly Ash.**
Real Time 24hr Stack Gases, fumes and Fly Ash concentrations.
Cofuels, Waste Oil firing, with Fuel rate & Mix in 5 minute intervals.
- (6) **Mining Noise Health Implications**
Coal Washery Low Frequency & Ground Vibrations – body sensitivity
Night Sleep deprivation from “clanging” as “dozing off” Risk. (Bulga)
- (7) **Air Quality Human Disease Risk Guidelines(Air Profile Guide)**
Asthma Allergen Guide Number Spores / m³
Mining Operations Diesel & Fugitive Emissions Zones xx ug/m³
Toxicity Risk of Rainwater Tanks from Air Pollution Fallout
PM release from Haul Roads & Mine Water Vapourisation Fans
Health Risk Assessments of Development proposals by NSW Health
- (8) **Hunter River Irrigation Water Pollution**
Real Time Water Quality Monitoring of Creeks & along Rivers
Irrigation Water Toxicity, soil retention & Farmers crops impact.
- (9) **Owner Residents “Home is my Castle” Rights**
Reinstate Buffer Zones between Industry and Resident
Privy Council test case & Injunctions precedents on Mining access
- (10) **Singleton Shire “Near Neighbours” Preventive Medical Costs**
GP, Medicines, Work sickies, travel costs related to Air Pollution events.
Mining Pollution initiated Disease Syndrome hours impacted.



Composite Pictorial View of State Significant Adjunct to National Parks

Underground Mining is supported as it minimises the Surface impact on land, with Mine Air Pollution and Noise confined to localised Infrastructure areas where Pollution Mitigation Controls can be effectively achieved.



Since 2010 SSHEG has reported on the Aboriginal and Colonial significance of the grasslands that adjoin the UNESCO Greater Blue Mountains National Parks, having recently highlighted the Aboriginal, Colonial and Convict State Significant 1820's Cockfighter Valley Precinct from Broke to Jerrys Plains.

In 1984 Muswellbrook Shire Council earlier detailed the Landscape Conservation Area significance (Illustrated) of the alluvial Flats of the Central and Lower Goulbourn Rivers; where Coal Reserves are outlined by Malabar Mining on Drayton South and Spur Hill Mine Leases.



Already the Hunter Valley Community, Councils, and NSW Government are planning for the Hunter Valley after Mining. Strategically restricted Underground mining in such a way to achieve Concurrent use of Land for agriculture, Towns, Villages, Farms with Underground Mining; compares to the Coexistence Debate related to Open Cut Coal Mining.



The previous Heritage Fiasco as Open Cut Mining attempted to Bulldoze the Heritage listed Wambo Homestead Complex, has now been followed by another Coal Mine attempting the “Popular Vote” to “Relocate the Heritage Listed Ravensworth Homestead” rather than recognise the Community Enterprise Entity Cultural Significance.

SSHEG is calling in the first instance for all Hunter Valley Shire Councils, Minerals Council, and NSW Government Authorities to “Speak out Publicly and Support Aboriginal, Colonial and Convict Heritage”, or otherwise be condemned with consequential damages.

Dr Neville Hodkinson PhD

Singleton Shire Healthy Environment Group

DENMAN		LANDSCAPE CONSERVATION AREA		HUNTER	
Location		Name or identification of listing		Region	
Proposer: A.M. WARD R.MCDUGALL		Crown land X	Freehold X	Map reference Singleton 1 : 250 000	
Date of Proposal	16.8.84	Local Govt Area/s		Owner/s	
Suggested Listing Category	CLASSIFIED	MUSWELLBROOK SHIRE		PRIVATE/VARIOUS	
Committee (Trust use)	LANDSCAPE CONSERVATION				
Council (Trust use)	21.1.85				
Reasons for Listing					
<p>Aesthetic: The lush cultivated alluvial flats of the central Hunter and lower Goulburn Rivers present a magnificent view, with the wide valley floor of majestic scale bounded by low hills to the east and west and the rugged escarpment of Wollemi National Park to the south (Appendix A).</p> <p>Social: This area contains many of the high quality properties and large pastoral estates which contribute to the great rural wealth of the Hunter Valley (Appendix B).</p>					
Description					
<p>The area begins along the Hunter River a short distance below Muswellbrook and comprises the long sweep of valley floor extending south-westerly some 25 km to the junction of the Goulburn River at Denman. The section of the Goulburn River Valley below Sandy Hollow is included. The area then extends some 25 km south-easterly down the Hunter Valley to Jerrys Plains Ridge. In this lower section, the valley widens and embraces several major tributaries. The escarpment of Wollemi National Park comprises the southern boundary of the area.</p> <p>Geology and Landform - (Appendix C)</p>					
Recommendations					
<p>The high scenic and cultural qualities of the listed area should be protected through appropriate Environmental Protection zonings under a Local Environmental Plan.</p> <p>Open cut mining of the alluvial river flats should not be permitted. Should it be necessary for open-cut mining of the non-alluvial lands, the aesthetic and social values of the Classified area should be recognised in the mining operation and the rehabilitation programme.</p>					
Bibliography					
<p>W. Allan Wood : Dawn in the Valley : Wentworth Books 1972 C.S.I.R.O. : General Report on the Lands of the Hunter Valley 1963</p>					

Without prejudice



State Significant Adjunct to UNESCO Greater Blue Mountains National Parks